

7. TROUBLE SHOOTING

To call for service, please have the model, serial number, and description of the problem available.

PROBLEM	POSSIBLE CAUSE	SOLUTION
NO LIGHT (UPS NOT ON)	1. The power switch is in "OFF" or not pressed	1. Press power switch to turn on.
	2. The voltage for battery is weak	2. Re-charge the UPS at least 8 hours.
	3. Battery failure	3. Replace with the same type of battery or call for service.
	4. Power Connection loses	4. Check the input power and replug it again
BUZZER BEEPS CONTINUOUSLY	1. Overload of the UPS.	1. Remove the noncritical load or call for service.
BACKUP TIME IS SHORT OR ALWAYS IN "BATTERY MODE"	1. Battery failure	1. Replace with same type of battery or call for service.
	2. AC fuse may be burnout.	2. Replace fuse or call for service.
	3. Battery is not fully charged.	3. Re-charge the UPS at least 8 hours.
	4. Power Connection loses	4. Check the input power and replug it again

POWER WALKER VI 400/600/800

Uninterruptible Power Supply

USER'S MANUAL



**Thank you for
purchasing PowerWalker UPS.**

Safety information and operating instructions are included in this manual. To ensure the correct use of the UPS, please read this manual thoroughly before operate it. And save this manual properly.

1. INTRODUCTION

PowerWalker VI series is a line interactive UPS which is designed to protect your personal computer or sensitive electronic equipments. The UPS is equipped with boost to stabilize input voltage. And it also employs microprocessor control and allows wide input voltage from 85VAC to 284VAC with overload protection. The UPS can be automatically started up without AC power supplied. In addition, this UPS provides advanced modem or telephone line surge protection, and compact design conserves space which can be placed in horizontally or vertically on your desk. It is equipped with many features that allow any attached equipment to operate longer and more reliability. It is ideal protection equipment against spikes, surges, sags or blackouts.

Description of Features:

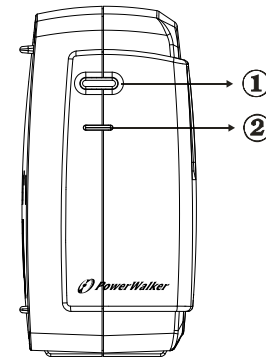
- Compact size and light weight design which can placed in horizontally or vertically on the cabinet or desk
- Easy to use and install
- Utilized microprocessor control to maximize the reliability and efficiency
- Equipped with built-in boost function
- Cold start function
- Battery power energy saving and overload protection
- Provides advanced telephone/fax or modem surge suppression protection
- Built-in RS-232 with connecting intelligent monitoring software

2. SAFETY REQUIREMENTS

- Please save this manual properly. This manual includes important safety information. Please read it carefully and thoroughly before operating the UPS. Comply with all the warnings and operating instructions on the unit and in the manual strictly.
- To reduce the risk of electric shock, the user must disconnect the UPS from the mains supply before installing any cable.
- To reduce the risk of electric shock. Do not attempt to disassemble the UPS. This UPS is no user serviceable parts inside. Please contact qualified service personnel to do any service.
- Do not connect with laser printers, cosmetic appliances, medical equipments, microwave ovens, vacuum cleaners or heavy duty hardware to UPS because they take too much power.
- Do not dispose of batteries in a fire. They may explode.
- Do not open or mutilate batteries. They contain an electrolyte that is toxic and harmful to the skin and eyes.
- Do not allow liquid or foreign object to enter inside of UPS.
- Do not block off ventilation openings in the UPS system's housing.
- Do not place the UPS near water or in environments of excessive humidity.
- Remove personal metal items such as rings, bracelets, necklaces, and watches when working with batteries. Batteries can produce a short-circuit current high enough to make metal melt, and could cause severe burns.

3. OVERVIEW

Front Panel



1. ON/OFF Button

Press the On/Off button to turn on or off

2. LED INDICATOR

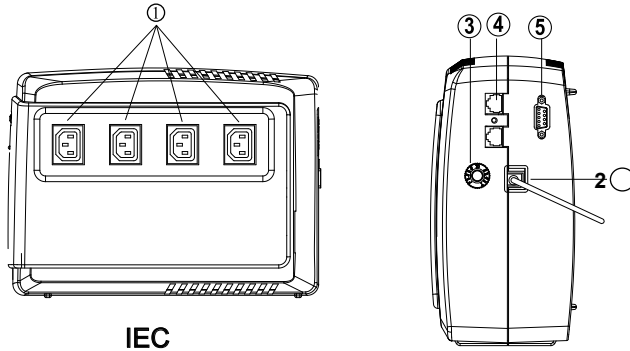
- On-Line Indicator

The green light indicator illuminates when the input line voltage is normal

- Backup Indicator

The green light indicator flashes when the internal battery is being used

Back Panel



IEC

1. Battery Power Supplied Receptacle

The power supplied receptacles are used for battery to power up your equipments while AC is failure.

2. AC Input Power Receptacle

The power receptacle is used to plug in the power cord that provides power to the UPS

3. Circuit Breaker

The circuit breaker is used to protect your equipment against the event of short-circuit or system overload.

4. Telephone/Fax/Modem Surge Suppression Port

This surge suppression port is used to protect the telephone or modem line while connecting the

5. RS-232 Communication Port

This communication port is used to communicate with a computer or modem and support the operating systems

4. INSTALLATION

Before the installation, please ensure the power switch on the UPS is in "OFF" position, and the voltage of the AC utility source corresponds to the identification label on the rear panel.

1. Inspection

Inspect the UPS upon the receipt. If there is any damage, please report it to dealer immediately. The packaging is used recyclable material, please save it for reuse or dispose of it properly.

2. Placement

Install the UPS in a protected area within a temperature range from 0 - 40°C and relative humidity of 0 - 90% without condensing. And place the UPS in a location free from excessive dust and chemical fumes. Please notice that the UPS voltage and power rating match to the line voltage and load requirements.

3. Connection

Connect the power cord to the utility power to power up the UPS. Press "ON" button to turn on the UPS, the green light indicator illuminates that AC utility voltage is present.

4. Charge the Battery

Charge the battery automatically when UPS is connected to utility power. Some charges may be lost. It is recommended that the battery will be re-charged for at least 8 hours before using the UPS.

5. Connect the Computer

Connect the interface cable from your computer to the output receptacles on the back panel of the UPS.

6. Connect the Telephone/Modem Line

Connect a single telephone cable into the "IN" telephone/modem surge suppression port on the back of the UPS. Require another length of telephone cable to connect into "OUT" telephone/modem port on the back of UPS to the modem input socket.

7. Connect the RS-232 Port

Connect a RS-232 serial cable from RS-232 on the back of the UPS to Computer Systems that will be auto detected.

8. Green Mode Function

"Green mode" enables to save the power if none of the load is connecting.

9. DC Start Function

When the power is not supplied from AC utility, DC start function will be started up automatically.

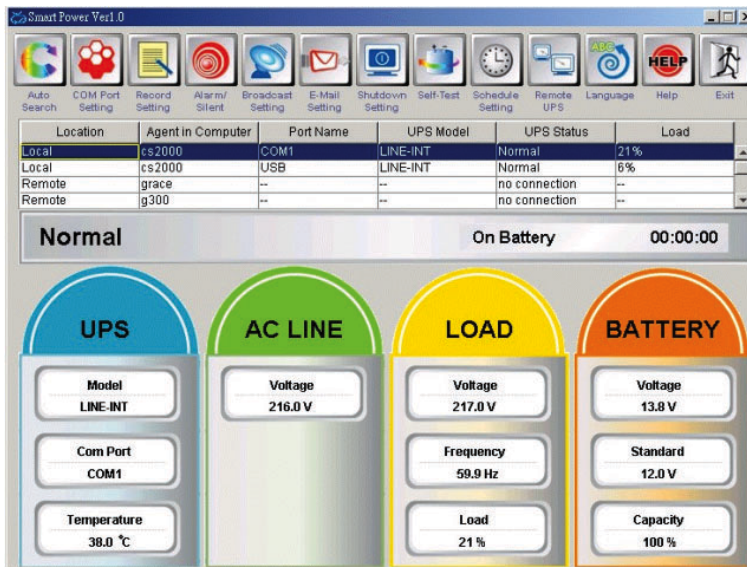
10. Switch Off

Press "OFF" button to turn off the UPS after use or test.

5. MONITORING SOFTWARE

After the UPS has been installed, you must install the software(Smart Power) that came packaged with your UPS. Smart Power monitoring software performs the monitoring and controlling functions. This software displays the status and diagnostic symptoms on the monitor. In case of the power failure, it provides the auto shutdown for the computer.

If you download the software from Internet, please key the serial number: 726T25-4791-2N39546.



6. TECHNICAL SPECIFICATION

MODEL		PowerWalker VI 400	PowerWalker VI 600	PowerWalker VI 800
CAPACITY	VA/W	400VA/240W	600VA/360W	800VA/480W
INPUT	Voltage	110/120VAC or 220/230/240VAC		
	Voltage Range	85-140VAC or 162-290VAC		
	Frequency	45-65 Hz (Auto Sensing)		
OUTPUT	Voltage (Batt. Mode)	110/120/220/230/240VAC +/-10%		
	Frequency (Batt. Mode)	50Hz or 60Hz +/-1 Hz		
	Output Waveform (line mode)Battery mode	Modified Sinewave Stepwave		
BATTERY	Battery Type	12V4.5Ah x 1	12V7Ah x 1	12V9Ah x 1
	Backup Time (at a PC load with 15" monitor)	8 minutes	20 minutes	30 minutes
	Recharge Time	8 hours to 90% after complete discharge		
TRANSFER TIME		Typical : 4-6 ms and 13ms(max)		
INDICATOR	AC Mode	Green lighting		
	Backup Mode	Green flashing		
AUDIBLE ALARM	Backup Mode	Sounding every 10 seconds		
	Low Battery	Sounding every second		
	Overload	Sounding every 0.5 second		
PROTECTION	Full Protection	Discharge, overcharge, and overload protection		
PHYSICAL	Dimension DxWxH(mm)	287x212x107		
ENVIRONMENT	Noise Level	Less than 40dB		
INTERFACE	Smart RS-232	Windows family, Sun Solaris, IBM Aix, Compaq True64, UnixWare, FreeBSD, HP-UX, Linux and MAC		